

# Outer Dowsing Offshore Wind

## Environmental Statement

### Chapter 18 Marine Infrastructure and Other Users

#### Volume 2 Figures

Date: March 2024

Document Reference: 6.2.18  
Pursuant to APFP Regulation: 5  
(2)(a)

Company:	<b>Outer Dowsing Offshore Wind</b>	Asset:	<b>Whole Asset</b>			
Project:	<b>Whole Wind Farm</b>	Sub Project/Package:	Whole Asset			
Document Title or Description:	Chapter 18 Marine Infrastructure and Other Users					
Internal Document Number:	PP1-ODOW-DEV-CS-REP-0126	3 <sup>rd</sup> Party Doc No (If applicable):	N/A			
Outer Dowsing Offshore Wind accepts no liability for the accuracy or completeness of the information in this document nor for any loss or damage arising from the use of such information.						
<b>Rev No.</b>	<b>Date</b>	<b>Status / Reason for Issue</b>	<b>Author</b>	<b>Checked by</b>	<b>Reviewed by</b>	<b>Approved by</b>
01	March 2024	DCO Application	GoBe	GoBe	Shepherd & Wedderburn	Outer Dowsing

## Table of Figures








- Figure 18.1 Study Area (document reference 6.2.18.1)
- Figure 18.2 OWFs (document reference 6.2.18.2)
- Figure 18.3 Oil and Gas Blocks (document reference 6.2.18.3)
- Figure 18.4 Hydrocarbon Fields (document reference 6.2.18.4)
- Figure 18.5 Oil and Gas Platforms (document reference 6.2.18.5)
- Figure 18.6 Oil and Gas Subsea Infrastructure and Pipelines (document reference 6.2.18.6)
- Figure 18.7 Other Infrastructure (document reference 6.2.18.7)

350000

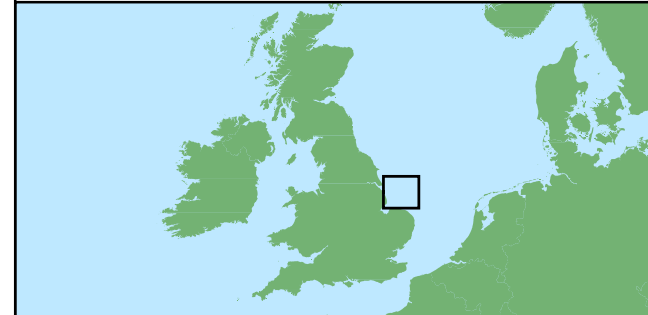
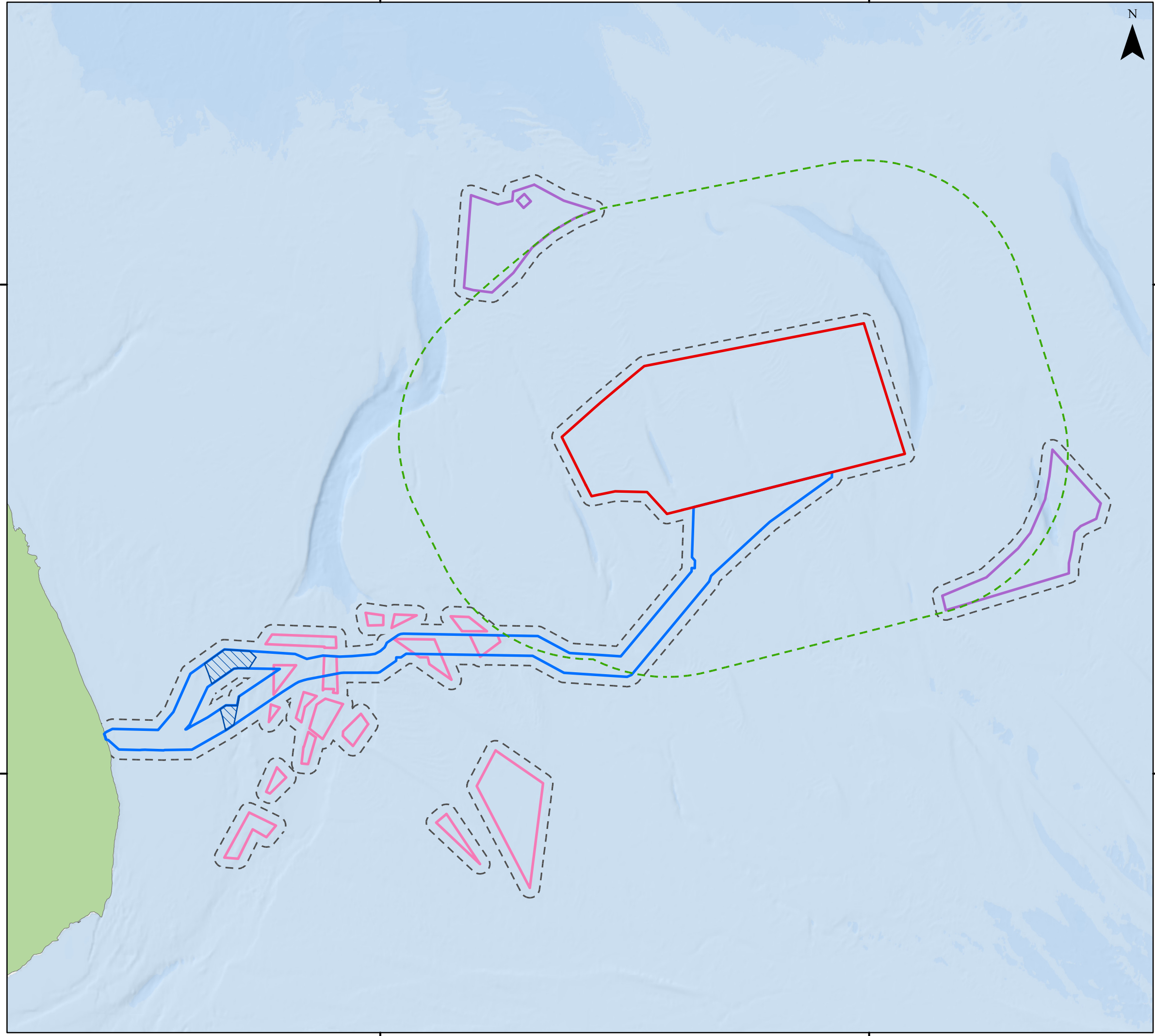
400000



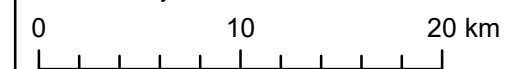
### Legend

-  Array Area
-  Offshore Export Cable Corridor
-  ORCP Area
-  Artificial Nesting Structure Area
-  Biogenic Reef Restoration Area
-  Direct Study Area
-  Helicopter Access Study Area

Document Path: Z:\GIS\GIS - Projects\0152 Outer Dowsing EIA\GIS\Figures\ES\Infrastructure and Other Marine Users\ODOW\_0152\_IOMU\_Fig18.1\_Study Area.mxd



Coordinate System: WGS 1984 UTM Zone 31N



Scale: 1:375,000 A3 Page Size

Environmental Statement

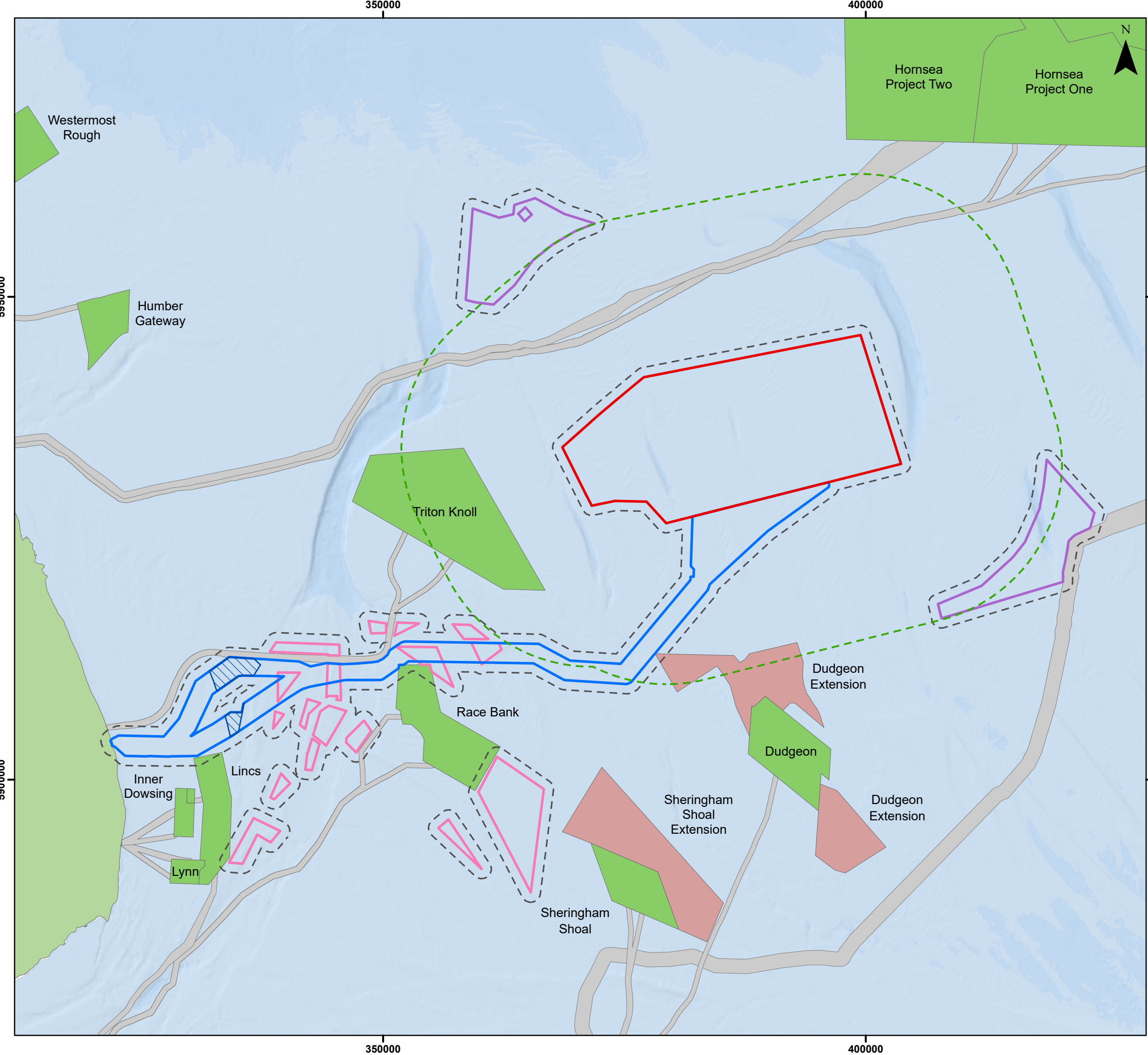
Infrastructure and Other Marine Users  
Study Area

Figure 18.1



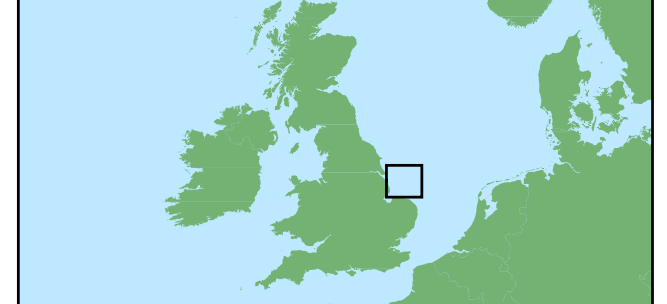
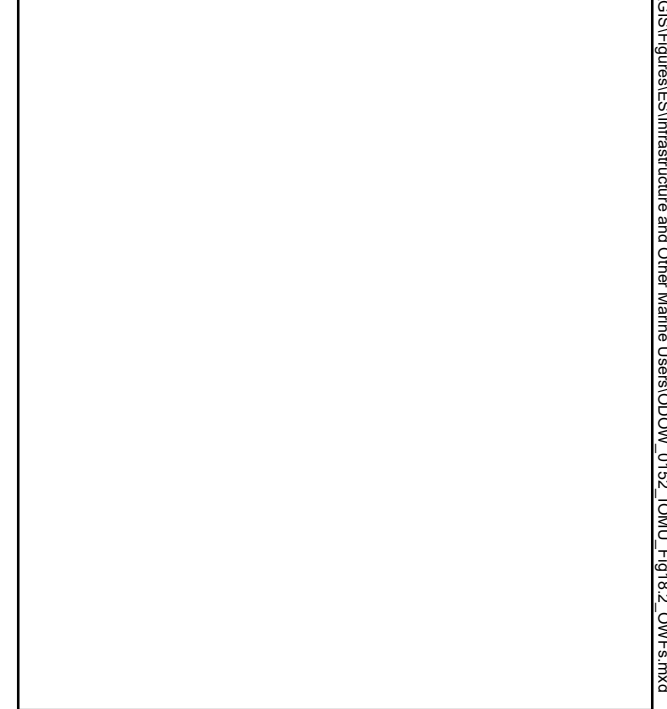
Date: 13/02/2024  
Produced By: BPHB  
Revision: 0.1

 Contains ESRI Basemapping;  
Esri, Garmin, GEBCO, NOAA  
NGDC, and other contributors



### Legend

- Array Area
- Offshore Export Cable Corridor
- ORCP Area
- Artificial Nesting Structure Area
- Biogenic Reef Restoration Area
- Direct Study Area
- Helicopter Access Study Area
- Windfarm (Operational)
- Windfarm (In Planning)
- Windfarm Cable Agreement



Environmental Statement  
 Offshore Windfarms  
 Figure 18.2

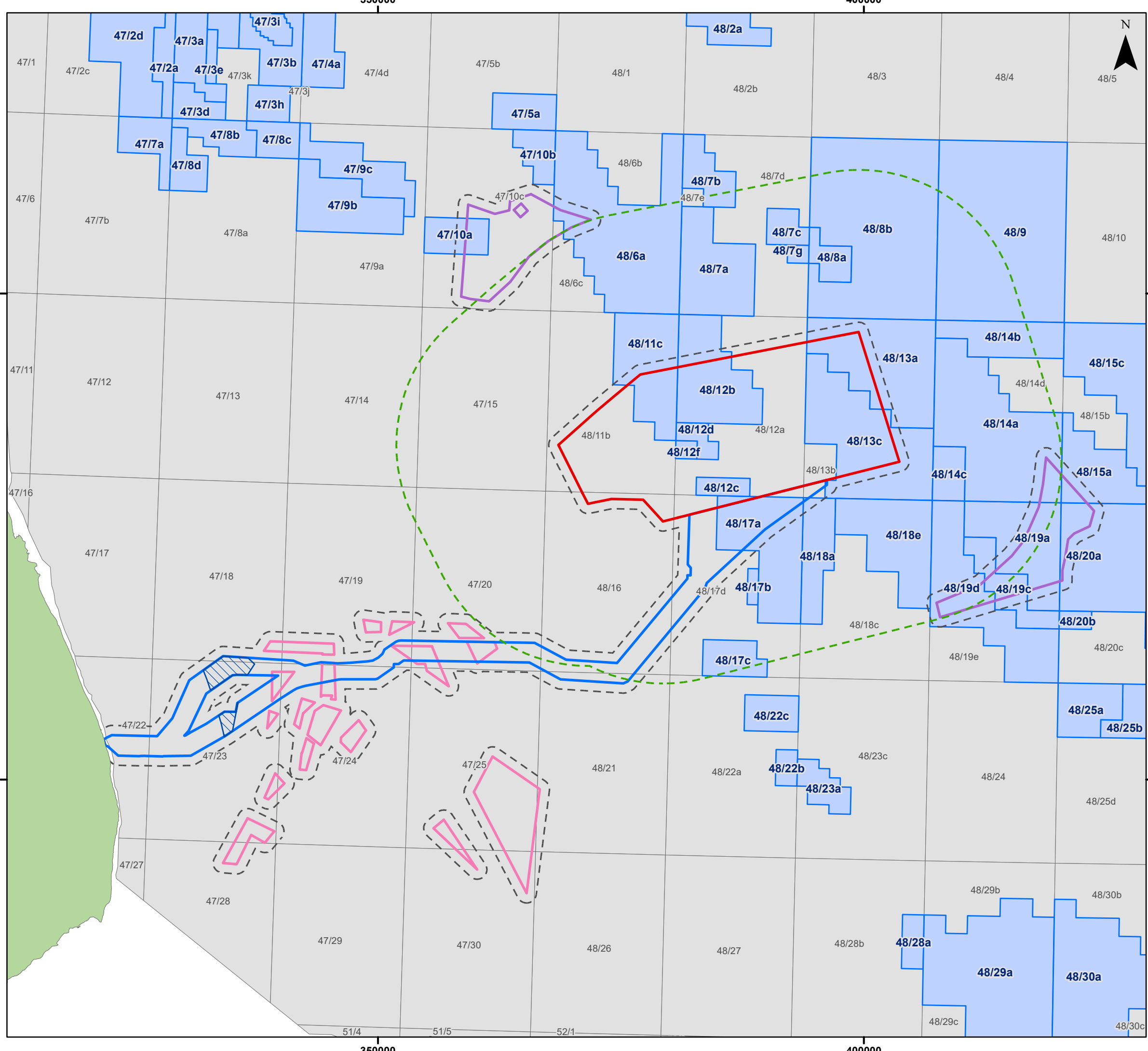
**OUTER DOWSING**  
OFFSHORE WIND

**GoBe**

Date: 13/02/2024  
 Produced By: BPHB  
 Revision: 0.1

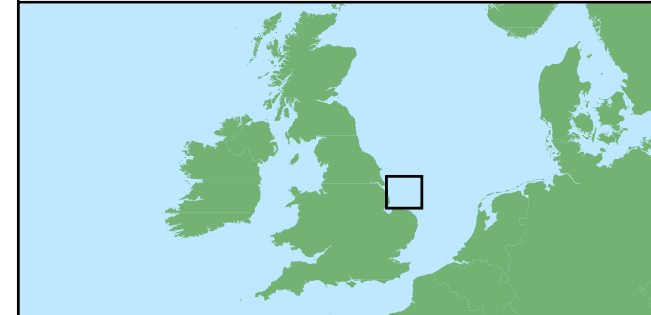
Contains ESRI Basemapping;  
 Esri, Garmin, GEBCO, NOAA  
 NGDC, and other contributors

Document Path: Z:\GIS\GIS - Projects\0152 Outer Dowsing EIA\GIS\Figures\ES\Infrastructure and Other Marine Users\ODOW\_0152\_IOMU\_Fig18.2\_OWf-s.mxd



### Legend

- Array Area
- Offshore Export Cable Corridor
- ORCP Area
- Artificial Nesting Structure Area
- Biogenic Reef Restoration Area
- Direct Study Area
- Helicopter Access Study Area
- Licensed Block
- Unlicensed Block



Coordinate System: WGS 1984 UTM Zone 31N  
 0 10 20 km  
 Scale: 1:375,000 A3 Page Size

Environmental Statement  
 Oil and Gas Licence Blocks  
 Figure 18.3

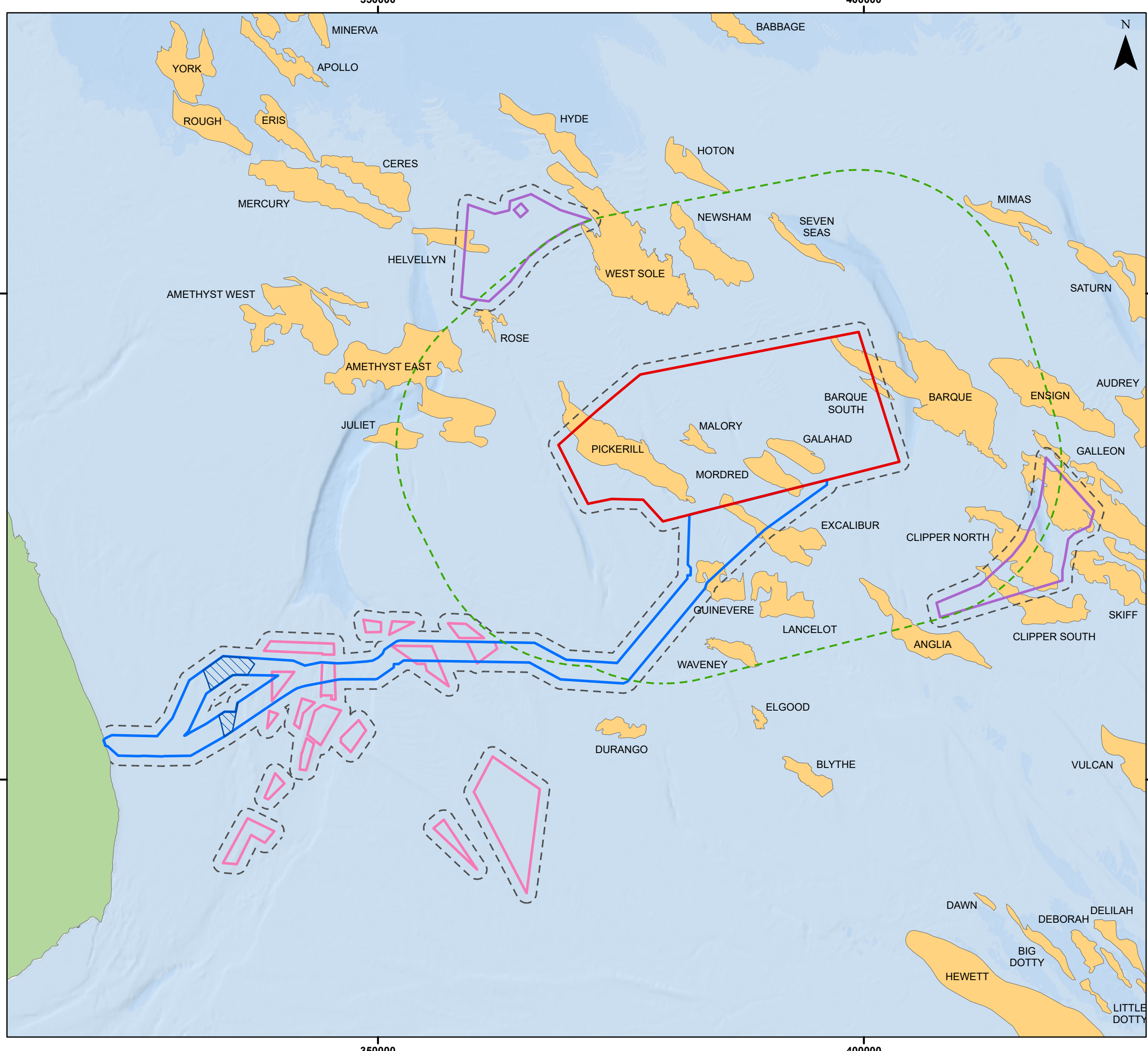


Date: 13/02/2024  
 Produced By: BPHB  
 Revision: 0.1



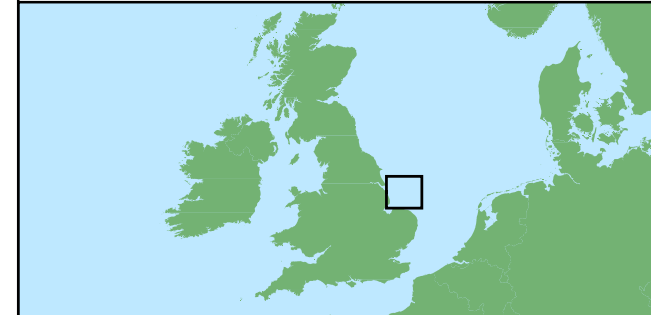
Contains ESRI Basemapping:

Document Path: Z:\GIS\GIS - Projects\0152 Outer Dowsing EIA\GIS\Figures\ES\Infrastructure and Other Marine Users\ODOW\_0152\_IOMU\_Fig18.3\_Oil and Gas Blocks.mxd



**Legend**

- Array Area
- Offshore Export Cable Corridor
- ORCP Area
- Artificial Nesting Structure Area
- Biogenic Reef Restoration Area
- Direct Study Area
- Helicopter Access Study Area
- Hydrocarbon Fields



Coordinate System: WGS 1984 UTM Zone 31N  
 0 10 20 km  
 Scale: 1:375,000 A3 Page Size

Environmental Statement  
 Hydrocarbon Fields  
 Figure 18.4



Date: 13/02/2024  
 Produced By: BPHB  
 Revision: 0.1

 Contains ESRI Basemapping; Esri, Garmin, GEBCO, NOAA NGDC, and other contributors

Document Path: Z:\GIS\GIS - Projects\0152 Outer Dowsing ELA\GIS\Figures\ES\Infrastructure and Other Marine Users\ODOW\_0152\_IOMU\_Fig18.4\_Hydrocarbon\_Fields.mxd

350000

400000



5950000

5950000

5900000

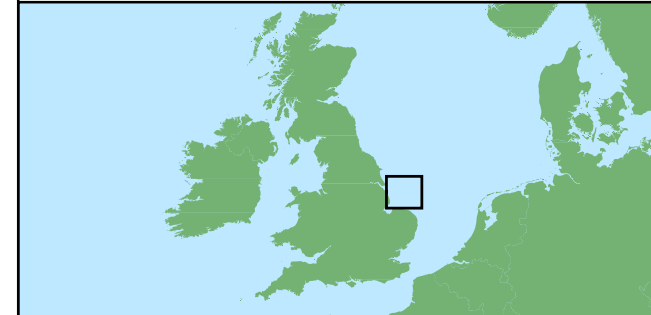
5900000

350000

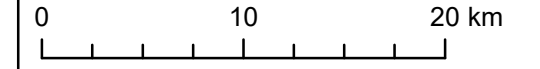
400000

### Legend

- Array Area
  - Offshore Export Cable Corridor
  - ORCP Area
  - Artificial Nesting Structure Area
  - Biogenic Reef Restoration Area
  - Direct Study Area
  - Helicopter Access Study Area
- Platforms (Status)**
- Active
  - Abandoned / Not In Use / Removed



Coordinate System: WGS 1984 UTM Zone 31N



Scale: 1:375,000 A3 Page Size

Environmental Statement

Oil and Gas Platforms

Figure 18.5

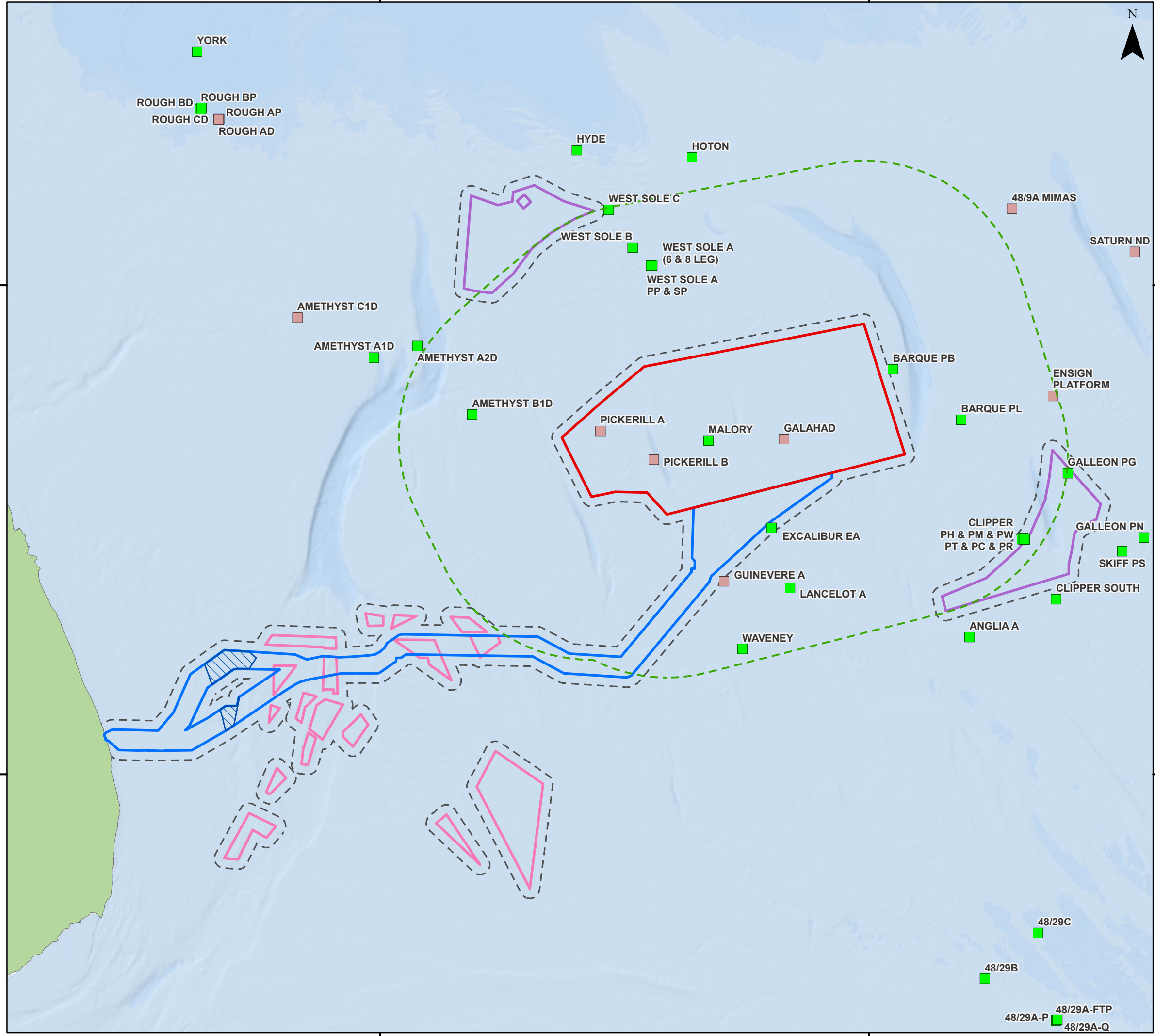


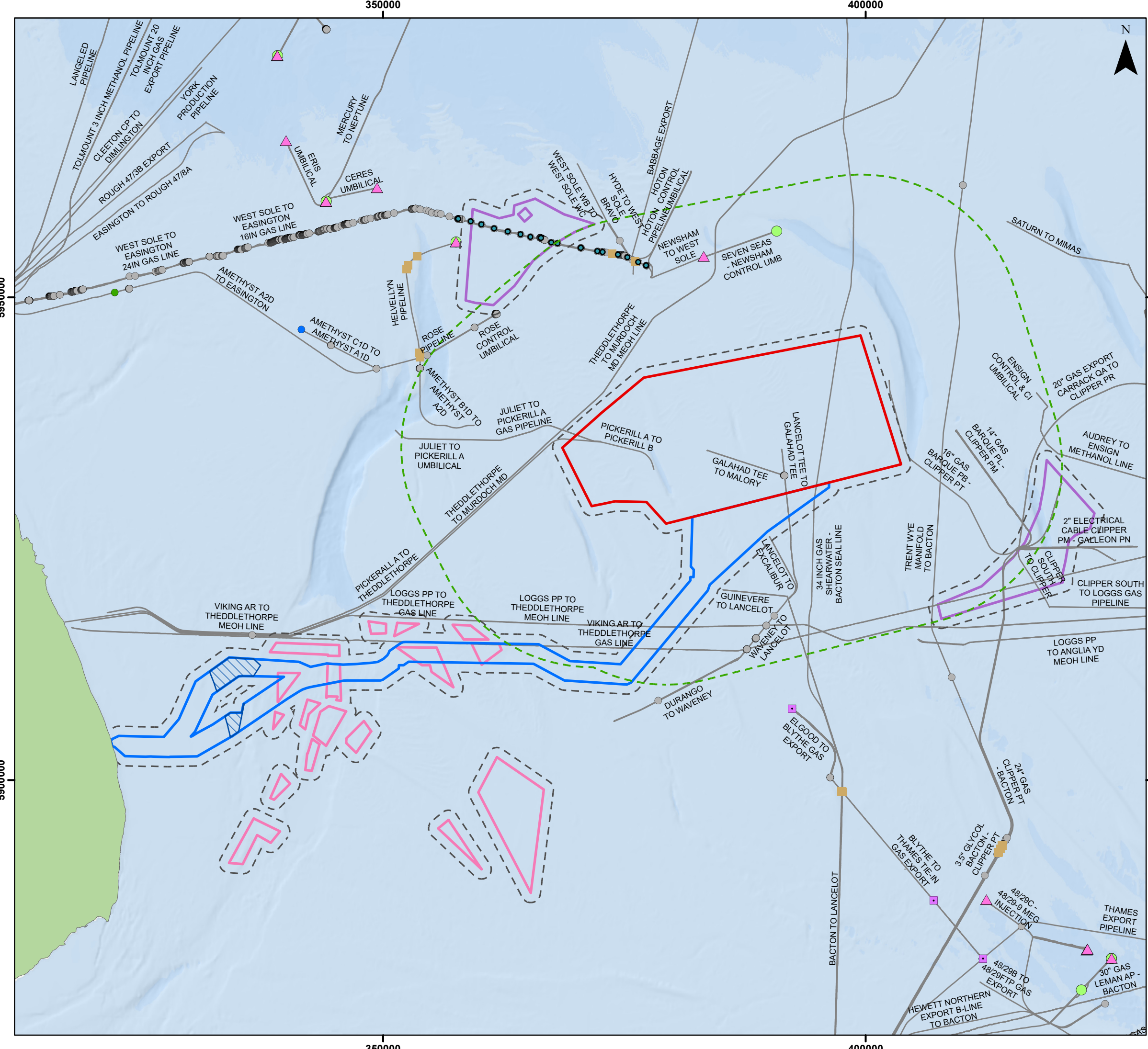
Date: 13/02/2024  
Produced By: BPHB  
Revision: 0.1



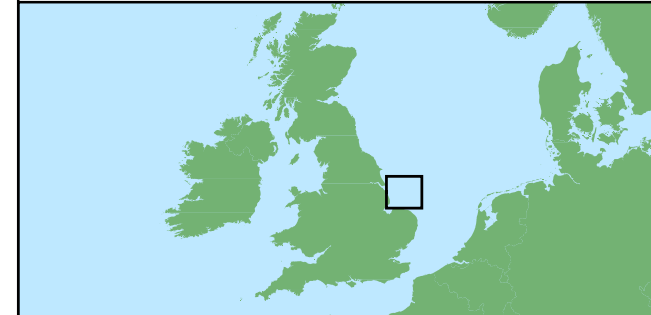
Contains ESRI Basemapping;  
Esri, Garmin, GEBCO, NOAA  
NGDC, and other contributors

Document Path: Z:\GIS\GIS - Projects\0152 Outer Dowsing ELA\GIS\Figures\ES\Infrastructure and Other Marine Users\ODOW\_0152\_IOMU\_Fig18.5\_Oil and Gas Platforms.mxd





- ### Legend
- Array Area
  - Offshore Export Cable Corridor
  - ORCP Area
  - Artificial Nesting Structure Area
  - Biogenic Reef Restoration Area
  - Direct Study Area
  - Helicopter Access Study Area
  - Subsea Pipeline
- ### Oil and Gas Active Subsea Infrastructure
- Anode Assembly
  - Manifold
  - Mattress
  - Obstruction
  - Protection
  - Rock Dump
  - ▲ Wellhead
  - Other Subsea



Coordinate System: WGS 1984 UTM Zone 31N  
 0 10 20 km  
 Scale: 1:375,000  
 A3 Page Size

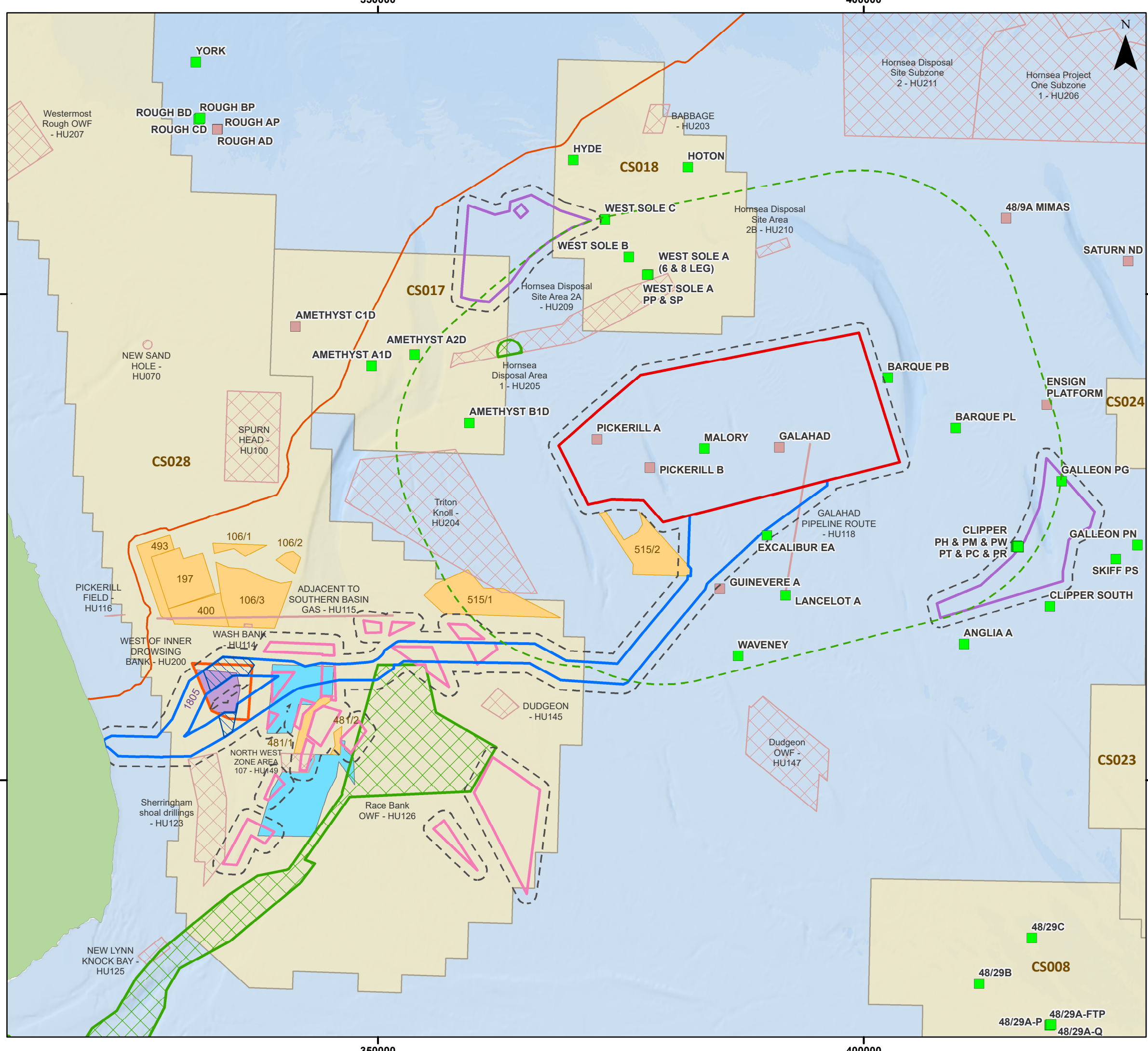
Environmental Statement  
 Oil and Gas Subsea Infrastructure and Pipelines  
 Figure 18.6



Date: 13/02/2024  
 Produced By: BPHB  
 Revision: 0.1  
 Contains ESRI Basemapping; Esri, Garmin, GEBCO, NOAA NGDC, and other contributors

Document Path: Z:\GIS\GIS - Projects\0152 Outer Dowsing ELA\GIS\Figures\ES\Infrastructure and Other Marine Users\ODOW\_0152\_IOMU\_Fig18.6\_Oil and Gas Subsea Infrastructure and Pipelines.mxd





### Legend

- Array Area
- Offshore Export Cable Corridor
- ORCP Area
- Artificial Nesting Structure Area
- Biogenic Reef Restoration Area
- Direct Study Area
- Helicopter Access Study Area
- Carbon Storage License Areas
- Viking Link Interconnector

**Platforms (Status)**

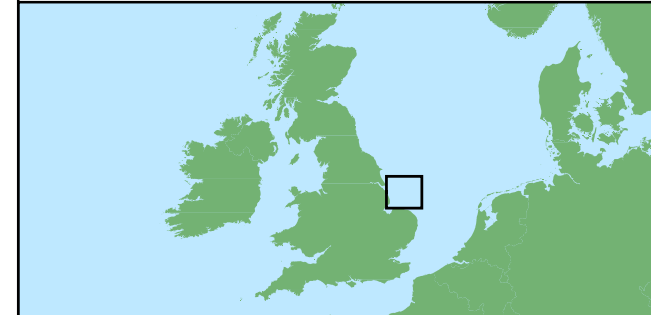
- Active
- Abandoned / Not In Use / Removed

**Aggregate Areas**

- Production Agreement Area
- Exploration and Option Area
- Provisional Aggregate Area (2103)

**Disposal Areas Status (CEFAS)**

- Open
- Not For Waste Disposal
- Closed



Coordinate System: WGS 1984 UTM Zone 31N

0 10 20 km

Scale: 1:375,000 A3 Page Size

Environmental Statement

Other Offshore Infrastructure and License Areas

Figure 18.7



Date: 13/02/2024  
 Produced By: BPHB  
 Revision: 0.1

Contains ESRI Basemapping;  
 Sources: Esri, GEBCO, NOAA,  
 National Geographic, Garmin,  
 HERE, Geonames.org, and  
**GoBe**

Document Path: Z:\GIS\GIS - Projects\0152 Outer Dowsing EIA\GIS\Figures\ES\Infrastructure and Other Marine Users\ODOW\_0152\_IOMU\_Fig18.7\_Other\_Infrastructure.mxd